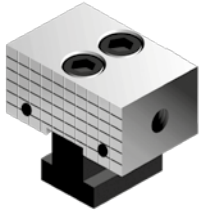


Ersatzbacken für Typ MFS

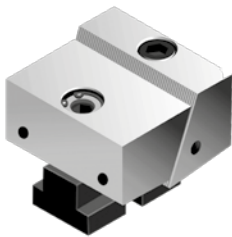
Spare jaws for type MFS



Feste Backe, Stück

Fixed jaw, piece

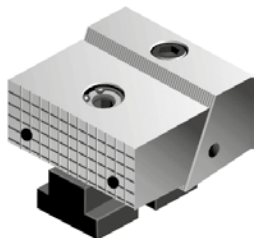
Für Typ / For type	Breite / Width mm	Länge / Length mm	kg	Art.-Nr. / Order no.
MFS50	48	38	0,4	<input checked="" type="checkbox"/> ZE-MFS-50FB
MFS75	73	50	1,3	<input checked="" type="checkbox"/> ZE-MFS-75FB



Bewegliche Backe, glatt, Stück

Movable jaw, plain, piece

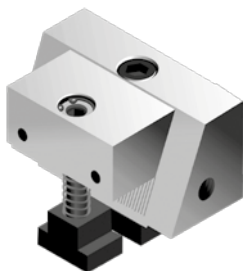
Für Typ / For type	Breite / Width mm	Länge / Length mm	kg	Art.-Nr. / Order no.
MFS50	48	54/58	0,6	<input checked="" type="checkbox"/> ZE-MFS-50GB
MFS75	73	70/75	1,8	<input checked="" type="checkbox"/> ZE-MFS-75GB



Bewegliche Backe, geriffelt, Stück

Movable jaw, serrated, piece

Für Typ / For type	Breite / Width mm	Länge / Length mm	kg	Art.-Nr. / Order no.
MFS50	48	54/58	0,6	<input checked="" type="checkbox"/> ZE-MFS-50RB
MFS75	73	70/75	1,8	<input checked="" type="checkbox"/> ZE-MFS-75RB



Bewegliche Backe, extrabreit, glatt, Stück

Movable jaw, enlarged, plain, piece

Für Typ / For type	Breite / Width mm	Länge / Length mm	kg	Art.-Nr. / Order no.
MFS50	63	56	1,1	<input checked="" type="checkbox"/> ZE-MFS-50XLB
MFS75	109	60	3	<input checked="" type="checkbox"/> ZE-MFS-75XLB