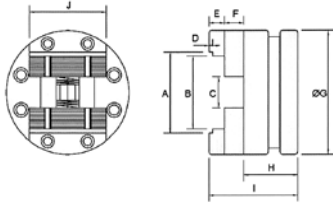
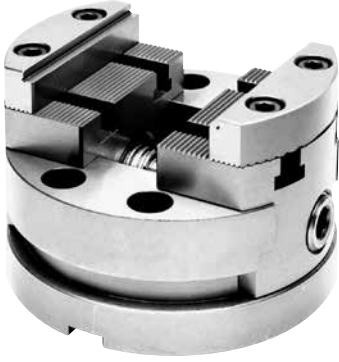


# 5-Achsen-Zentrischspanner, Typ SR5

## 5-axes self-centering vices, type SR5



### Zentrischspanner, Typ SR5

#### Self-centering vices, type SR5

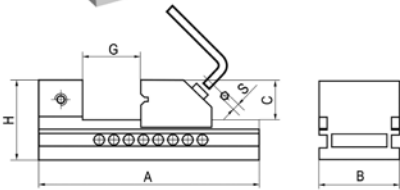
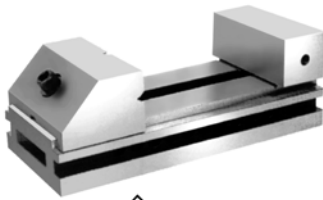
**NEU** !

- für 5-Achs-Bearbeitung
- runder Körper, für weniger Störkonturen und geringeren Platzbedarf
- ideal zum Einsatz auf Rundtischen, Teilapparaten etc.
- suitable for 5-axis machining
- round body for less interference and less requirement space
- ideally suited to indexing spacers, rotary tables etc.

Typ / Type	A mm	B mm	C mm	D mm	E mm	F mm	G mm	H mm	I mm	J mm	Art.-Nr. / Order no.
100	105	95	40	5	20	25	160	70	115	100	14-SR5-100
130	135	125	50	5	20	25	210	80	125	130	14-SR5-130
160	165	155	60	5	25	25	250	90	140	160	14-SR5-160

# Schleifschraubstöcke

## Tool maker vices



### TMV-A, mit Schnellverstellung

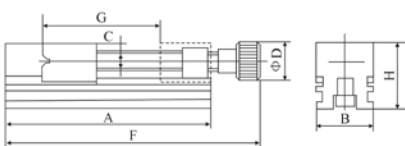
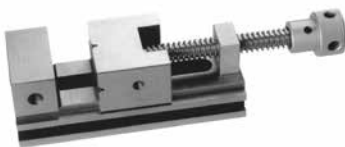
#### TMV-A, with quick adjustment

- aus Legierungsstahl, wärmebehandelt, gehärtet 58 HRC und feingeschliffen
- geeignet zum Einsatz auf Fräs- und Schleifmaschinen
- auch als Kontrollschraubstock verwendbar
- Parallelität: 0,005 mm / 100 mm
- Rechtwinkligkeit: 0,005 mm / 100 mm
- made from heat treated alloy steel, subzero treatment for stress relief against distortion, hardened 58 HRC and finished by grinding
- suitable for milling and grinding machines
- also suitable as reference for inspection
- parallelism: 0,005 mm / 100 mm
- squareness: 0,005 mm / 100 mm

Typ / Type	A mm	B mm	C mm	G mm	H mm	S mm	kg	Art.-Nr. / Order no.
A50	135	50	25	65	50	5	2	14-TMV-A50
A63	170	63	32	85	63	6	3	14-TMV-A63
A73	185	73	35	100	70	6	4	14-TMV-A73
A100	240	100	45	125	90	8	10	14-TMV-A100
A125	280	125	50	160	100	10	16	14-TMV-A125
A150	300	150	50	175	100	10	18	14-TMV-A150

### TMV-B, mit Gewindespindel

#### TMV-B, screw type



Typ / Type	A mm	B mm	C mm	Ø D mm	G mm	H mm	F mm	kg	Art.-Nr. / Order no.
B50	150	50	25	32	65	50	177,5	2	14-TMV-B50
B73	205	73	35	43	100	70	227,5	5	14-TMV-B73
B100	255	100	45	43	125	90	305,5	11	14-TMV-B100