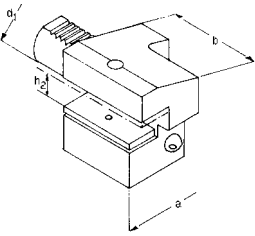


# VDI-Halter

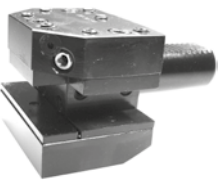
## VDI-Tool holders



### Typ C4, Axial-Werkzeughalter, überkopf, links

#### Type C4, axial tool holder, inverted, left-hand

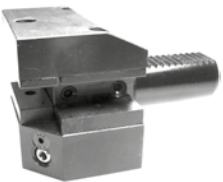
d1 mm	h2 mm	b mm	a mm	Art.-Nr. / Order no.
16	10/12	44	43	● 47-C4-16-12
20	12/16	50	52	● 47-C4-20-16
25	12/16	55	58	● 47-C4-25-16
30	16/20	70	76	● 47-C4-30-20
40	20/25	85	85	● 47-C4-40-25
50	25/32	100	100	● 47-C4-50-32
60	25/32	125	125	● 47-C4-60-32



### Typ D1, Vierkant-Mehrfach-Aufnahme

#### Type D1, multiple square tool holder

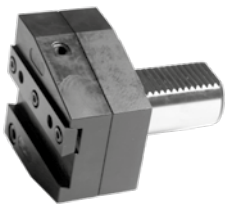
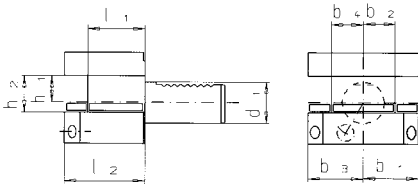
d1 mm	h2 mm	b mm	a mm	Art.-Nr. / Order no.
25	12/16	48	66	● 47-D1-25-16
30	16/20	60	76	● 47-D1-30-20
40	20/25	72	90	● 47-D1-40-25
50	25/32	85	105	● 47-D1-50-32



### Typ D2, Vierkant-Mehrfach-Aufnahme, überkopf

#### Type D2, multiple square tool holder, inverted

d1 mm	h1 / h2 mm	b mm	a mm	Art.-Nr. / Order no.
25	12/16	48	66	● 47-D2-25-16
30	16/20	60	76	● 47-D2-30-20
40	20/25	72	90	● 47-D2-40-25
50	25/32	85	105	● 47-D2-50-32



### Abstechhalter, rechts

#### Parting off tool holder, right-hand

d1 mm	b1 mm	h mm	l2 mm	h2 mm	Art.-Nr. / Order no.
25	60	64	50	26	○ 47-AR-25-26
30	70	71	50	26	● 47-AR-30-26
40	85	84,5	50	26	● 47-AR-40-26
40	85	84,5	50	32	● 47-AR-40-32
50	100	88	50	26	▶ 47-AR-50-26
50	100	88	50	32	● 47-AR-50-32
60	125	103	50	32	○ 47-AR-60-32

