



# Schnellwechselstahlhalter, BASIC

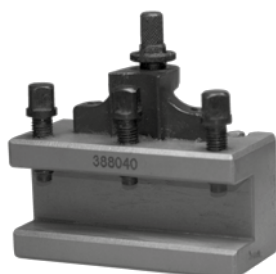
## Quick-change tool holders, BASIC

### Kopf Turret



| Größe /<br>Size | Typ /<br>Type  | Art.-Nr. /<br>Order no. |
|-----------------|----------------|-------------------------|
| Aa              | Kopf / Head Aa | ● BAS-100-100           |
| A               | Kopf / Head A  | ● BAS-100-106           |
| E               | Kopf / Head E  | ● BAS-100-123           |
| B               | Kopf / Head B  | ● BAS-100-141           |
| C               | Kopf / Head C  | ● BAS-100-156           |
| D               | Kopf / Head D  | ● BAS-100-177           |

### Drehstahlhalter Tool holder



| Größe /<br>Size | h<br>mm | l<br>mm | Typ /<br>Type | Art.-Nr. /<br>Order no. |
|-----------------|---------|---------|---------------|-------------------------|
| Aa              | 12      | 50      | DAa 12 50     | ● BAS-100-101           |
| A               | 20      | 75      | DA 20 75      | ● BAS-100-110           |
| E               | 20      | 100     | DE 20 100     | ● BAS-100-125           |
| E               | 25      | 100     | DE 25 100     | ● BAS-100-126           |
| B               | 25      | 120     | DB 25 120     | ● BAS-100-142           |
| B               | 25      | 140     | DB 25 140     | ● BAS-100-143           |
| B               | 32      | 120     | DB 32 120     | ● BAS-100-144           |
| B               | 32      | 140     | DB 32 140     | ● BAS-100-145           |
| C               | 32      | 150     | DC 32 150     | ● BAS-100-157           |
| C               | 32      | 170     | DC 32 170     | ● BAS-100-158           |
| C               | 40      | 150     | DC 40 150     | ● BAS-100-159           |
| C               | 40      | 170     | DC 40 170     | ● BAS-100-160           |
| C               | 45      | 170     | DC 45 170     | ● BAS-100-161           |
| D               | 40      | 180     | DD 40 180     | ● BAS-100-178           |
| D               | 50      | 180     | DD 50 180     | ● BAS-100-179           |
| D               | 63      | 180     | DD 63 180     | ● BAS-100-180           |

### Bohrstahlhalter Bar holder



| Größe /<br>Size | h<br>mm | l<br>mm | Typ /<br>Type | Art.-Nr. /<br>Order no. |
|-----------------|---------|---------|---------------|-------------------------|
| Aa              | 12      | 50      | HAa 12 50     | ● BAS-100-102           |
| A               | 20      | 90      | HA 20 90      | ● BAS-100-111           |
| E               | 30      | 100     | HE 30 100     | ● BAS-100-127           |
| B               | 32      | 130     | HB 32 130     | ● BAS-100-146           |
| C               | 32      | 160     | HC 32 160     | ● BAS-100-162           |
| C               | 40      | 160     | HC 40 160     | ● BAS-100-163           |
| D               | 50      | 180     | HD 50 180     | ● BAS-100-181           |