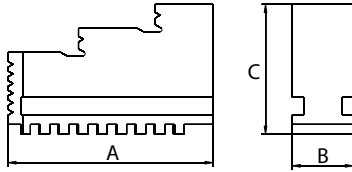
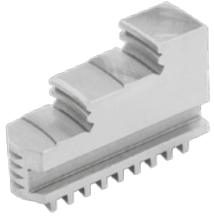


Backensätze für Planspiral-Drehfutter Jaws for lathe chucks

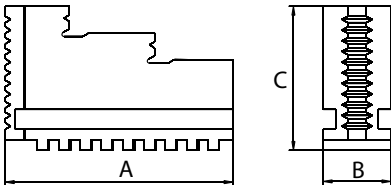
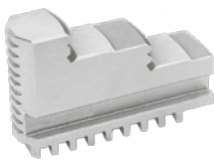
Drehbacken für Planspiral-Drehfutter Internally stepped solid jaws for lathe chucks



| Für / for Ø mm | A mm | B mm | C mm | 3-Ba. / 3-Jaw Art.-Nr. / Order no. | 4-Ba. / 4-Jaw Art.-Nr. / Order no. | 6-Ba. / 6-Jaw Art.-Nr. / Order no. |
|-------------------|---------|---------|---------|---------------------------------------|---------------------------------------|---------------------------------------|
| 80 | 32 | 11 | 28 | ● ZE-DB35-080 | - | - |
| 100 | 42 | 15 | 32 | ● ZE-DB35-100 | ● ZE-DB36-100 | ○ ZE-DB38-100 |
| 125 | 51 | 20 | 40 | ● ZE-DB35-125 | ● ZE-DB36-125 | ○ ZE-DB38-125 |
| 160 | 70 | 20 | 53 | ● ZE-DB35-160 | ● ZE-DB36-160 | ○ ZE-DB38-160 |
| 200 | 85 | 25 | 54 | ● ZE-DB35-200 | ● ZE-DB36-200 | ○ ZE-DB38-200 |
| 250 | 105 | 28 | 63 | ● ZE-DB35-250 | ● ZE-DB36-250 | ○ ZE-DB38-250 |
| 315 | 125 | 32 | 73 | ● ZE-DB35-315 | ● ZE-DB36-315 | ○ ZE-DB38-315 |
| 400 | 145 | 36 | 92 | ● ZE-DB35-400 | ● ZE-DB36-400 | ○ ZE-DB38-400 |
| 500 | 180 | 40 | 100 | ● ZE-DB35-500 | ● ZE-DB36-500 | ○ ZE-DB38-500 |
| 630/800 | 225 | 50 | 110 | ● ZE-DB35-630/800 | ● ZE-DB36-630/800 | ○ ZE-DB38-630 |

Preis pro Satz / Price per set

Bohrbacken für Planspiral-Drehfutter Externally stepped solid jaws for lathe chucks



| Für / for Ø mm | A mm | B mm | C mm | 3-Ba. / 3-Jaw Art.-Nr. / Order no. | 4-Ba. / 4-Jaw Art.-Nr. / Order no. | 6-Ba. / 6-Jaw Art.-Nr. / Order no. |
|-------------------|---------|---------|---------|---------------------------------------|---------------------------------------|---------------------------------------|
| 80 | 32 | 11 | 28 | ● ZE-BB35-080 | - | - |
| 100 | 42 | 15 | 32 | ● ZE-BB35-100 | ● ZE-BB36-100 | ○ ZE-BB38-100 |
| 125 | 51 | 20 | 40 | ● ZE-BB35-125 | ● ZE-BB36-125 | ○ ZE-BB38-125 |
| 160 | 70 | 20 | 53 | ● ZE-BB35-160 | ● ZE-BB36-160 | ○ ZE-BB38-160 |
| 200 | 85 | 25 | 54 | ● ZE-BB35-200 | ● ZE-BB36-200 | ○ ZE-BB38-200 |
| 250 | 105 | 28 | 63 | ● ZE-BB35-250 | ● ZE-BB36-250 | ○ ZE-BB38-250 |
| 315 | 125 | 32 | 73 | ● ZE-BB35-315 | ● ZE-BB36-315 | ○ ZE-BB38-315 |
| 400 | 145 | 36 | 92 | ● ZE-BB35-400 | ● ZE-BB36-400 | ○ ZE-BB38-400 |
| 500 | 180 | 40 | 100 | ● ZE-BB35-500 | ● ZE-BB36-500 | ○ ZE-BB38-500 |
| 630/800 | 225 | 50 | 110 | ● ZE-BB35-630/800 | ○ ZE-BB36-630/800 | ○ ZE-BB38-630 |

Preis pro Satz / Price per set

**Nachträglich bezogene harte Stufenbacken müssen im Futter ausgeschliffen werden
Hard jaws bought as spare parts have to be ground on the chuck**