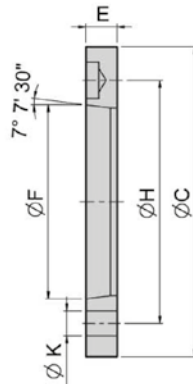


# Flansche nach DIN 55026 für Kraftspannfutter Adaptor plates according to DIN 55026 for power chucks

**Strong** AUTO



Stahl / Steel

Spindel / Spindle	C mm	E mm	F mm	H mm	K mm	Passende Futter / Matching chucks	Art.-Nr. / Order no.
A4	110	15	63,513	82,55	3-11	N-205	○ 29-FN-205/4
A4	110	15	63,513	82,55	4-11	NT-205	○ 29-FNT-205/4
A5	140	15	82,563	104,78	6-11	N-206, NB-306, V-206	○ 29-FN-206/5
A5	140	15	82,563	104,78	6-11	NT-206, VT-206	○ 29-FNT-206/5
A5	140	15	82,563	104,78	4-11	NIT-206	○ 29-FNIT-206/5
A6	170	17	106,375	133,35	6-13	N-208, NB-208, V-208	● 29-FN-208/6
A6	170	17	106,375	133,35	6-13	NT-208, VT-208	○ 29-FNT-208/6
A6	170	17	106,375	133,35	4-13	NIT-208	○ 29-FNIT-208/6
A6	170	17	106,375	133,35	6-13	NHT-208	○ 29-FNHT-208/6
A8	220	18	139,719	171,45	6-17	N-210, N-212, NB-210, V-210, V-212	● 29-FN-210/8
A8	220	18	139,719	171,45	6-17	NT-210, NT-212, VT-210, VT-212	○ 29-FNT-210/8
A8	220	18	139,719	171,45	4-17	NIT-210, NIT-212, VIT-212	○ 29-FNIT-210/8
A11	300	22	196,869	235	6-21	N-215, N-218, NB-212, V-215, V-218	○ 29-FN-215/11
A11	300	22	196,869	235	6-21	NT-215, VT-215	○ 29-FNT-215/11
A11	300	22	196,869	235	4-21	NIT-215, VIT-218	○ 29-FNIT-215/11
A15	380	27	285,775	330,2	6-25	N-220, V-221, V-224, V-232, NB-215, NB-218	○ 29-FN-220/15
A15	380	27	285,775	330,2	8-25	VIT-224, VIT-232	○ 29-FVIT-224/15
A20	520	25	412,775	463,6	6-25	N-224, N-232, V-240, V-250	○ 29-FN-224/20

**Strong** AUTO



**Fertiger Zugrohradapter inkl. Gewinde nach Kundenwunsch**  
**Ready machined draw tube adapter incl. thread according to customer's requirement**

**NEU** !

Art.-Nr. / Order no.

Beispiel / Ordering example = 29-ZRA-M74X2,0

○ 29-ZRA-