

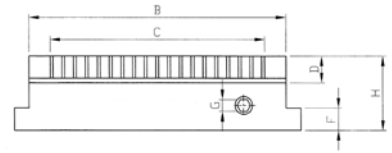
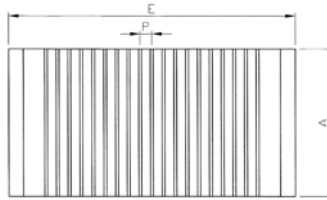
Magnet-Spannplatten

Magnetic plates

Permanentmagnet-Spannplatten

Permanent magnetic plates

- für Fräs- und Schleifarbeiten
 - Erzeugung der Magnetkraft durch Permanentmagnete
 - mit enger Querpolteilung
 - Ein- / Ausschalten über 6-Kant-Schlüssel
 - Haftkraft bis zu 100 N/cm²
- for milling and grinding operations
 - generation of magnetic force by permanent magnets
 - narrow pole pitch
 - on/off-operation by hexagonal wrench
 - holding force up to 100 N/cm²

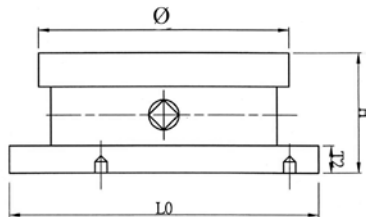
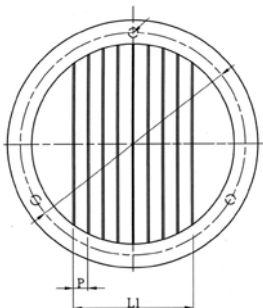


Größe / Size mm	A mm	B mm	C mm	D mm	P mm	G mm	E mm	F mm	H mm	kg	Art.-Nr. / Order no.
100x175	100	175	146	20	8 (2+6)	8	187	15	50	8	14-PMP18-100/175
125x250	125	250	206	20	8 (2+6)	8	262	15	50	15	14-PMP18-125/250
150x300	150	300	256	20	8 (2+6)	8	318	15	50	19	14-PMP18-150/300
150x450	150	450	406	20	8 (2+6)	8	468	15	50	28	14-PMP18-150/450
200x400	200	400	365	20	8 (2+6)	8	418	15	50	32	14-PMP18-200/400
250x500	200	500	456	20	8 (2+6)	8	518	15	50	50	14-PMP18-250/500
300x600	300	600	550	18	8 (2+6)	8	620	15	48	74	14-PMP18-300/600

Permanentmagnet-Rundfutter

Round permanent magnetic chucks

- für Dreh- und Schleifmaschinen, Teilapparate und Rundtische
 - Erzeugung der Magnetkraft durch Permanentmagnete
 - Ein- / Ausschalten über Schlüssel
 - Haftkraft bis zu 100 N/cm²
- for turning and grinding machines, dividing heads and rotary tables
 - generation of magnetic force by permanent magnets
 - on/off-operation by wrench
 - holding force up to 100 N/cm²



Ø mm	L1 mm	t2 mm	L0 mm	P mm	H mm	kg	Art.-Nr. / Order no.
150	101	18	200	9 (2+7)	78	9	14-PMPRD18-150
200	137	18	200	9 (2+7)	78	13	14-PMPRD18-200
250	191	18	250	9 (2+7)	78	20	14-PMPRD18-250
300	227	18	305	9 (2+7)	78	31	14-PMPRD18-300